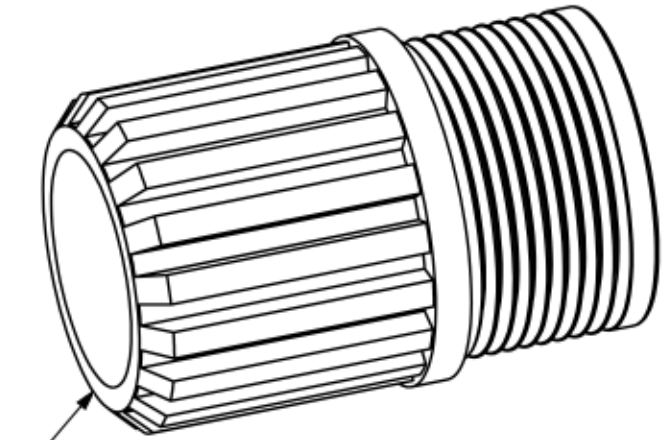
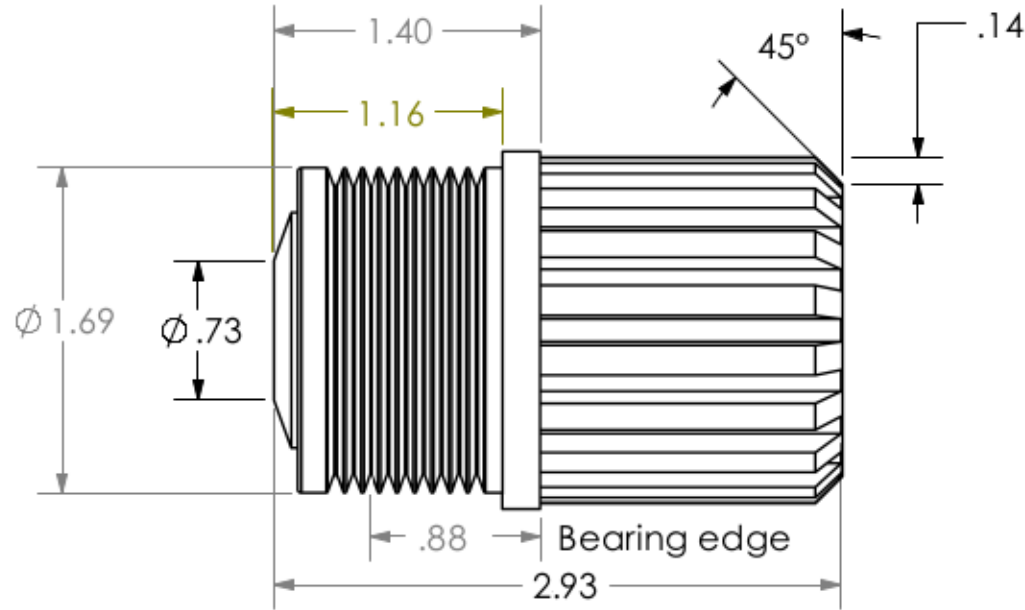


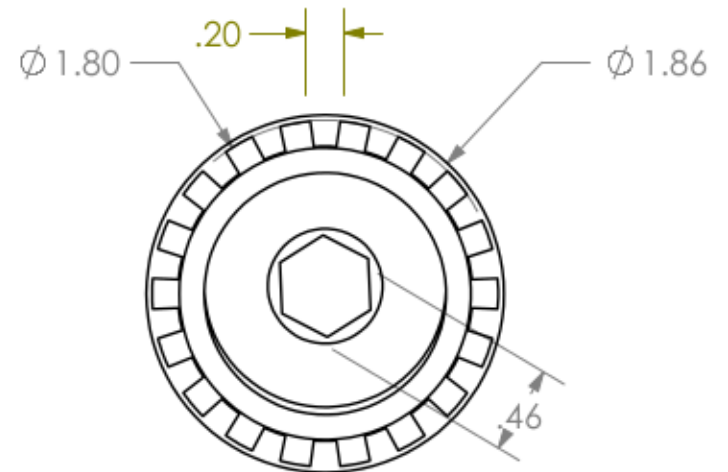
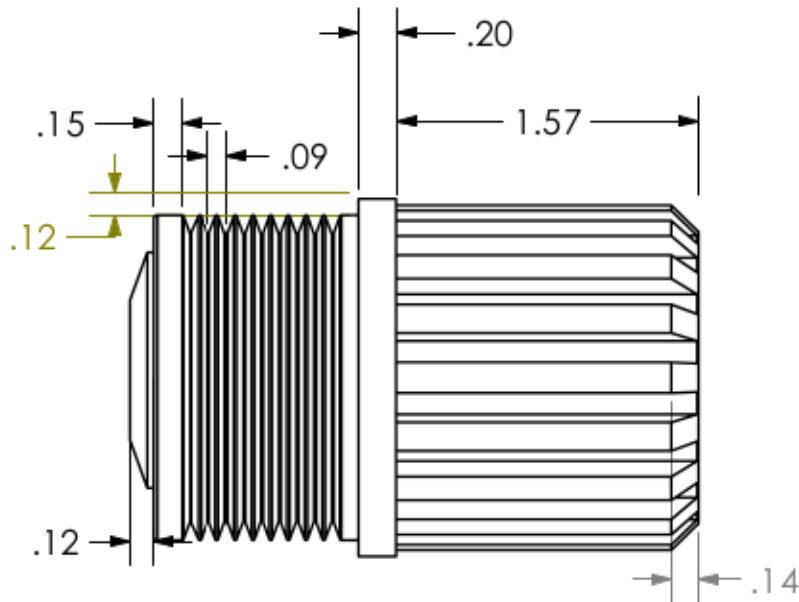
THE INFORMATION CONTAINED IN THIS DRAWING IS THE SOLE PROPERTY OF DURA-BELT, INC. ANY REPRODUCTION IN PART OR WHOLE WITHOUT THE WRITTEN PERMISSION OF DURA-BELT, INC. IS PROHIBITED.

Dimensions are in inches

UNLESS OTHERWISE SPECIFIED
DIMENSIONS ARE IN INCHES
TOLERANCES ARE:
FRACTIONS DECIMALS ANGLES
± 1/64 .XX ± .01 ± 3°
XXX ± .005



The hex insert of the second bearing, if installed, would extend .11" out from this surface.



ADDITIONAL NOTES

With one or two ABEC-1 6002 ZZ bearings with inserts for 7/16" hex shafts

SCALE 1:1 SIZE X REV. G

MATERIAL Nylon reinforced with fiberglass, anti-static

DATE 7-28-16

DRAWN BY JGH

SHEET 1 OF 1

DURA-BELT, INC.

PARTNAME Poly-V endcap for 1.9" rollers